

KNAUF

كناؤف



Technical Datasheet

05-2015

Knauf J Shaftwall Track

Knauf J Track are high quality galvanized steel sections used in shaftwall systems, that complies with ASTM 645 - 09a Standard. Their special design allows quick and easy installation of shaftwall constructions from one side only.



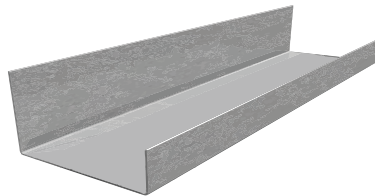
Certified by **Intertek**

Product Description

Knauf J Track are high quality galvanized steel sections used in shaftwall systems, that complies with ASTM 645 - 09a Standard. Their special design allows quick and easy installation of shaftwall constructions from one side only.

Technical Data

Dimensions (mm)				Pallet Details		
Thickness (mm)	Web	Flange	Length	Meters Per Pack	Pieces Per Pack	Weight (Kg approx.)
0.9	64	25 / 51	3000	240	80	238.56
0.9	102	25 / 51	3000	192	96	312.00
0.9	152	25 / 51	3000	288	64	400.08



Note:

Knauf Head Office

- ▶ Phone: +971 4 337 7170
- ▶ Fax: +971 4 334 9659
- ▶ P.O. Box: 112871, Dubai
- ▶ info@knauf.ae

Knauf Qatar Branch

P.O.Box 27111
Doha, State of Qatar
Tel: +974 44528191
Fax: +974 44528181

Knauf Manufacturing Plant

P.O.Box 50006
Ras Al Khaimah, U.A.E.
Tel: +971 7 221 5300
Fax: +971 7 221 5301

Made in UAE

The information provided in this leaflet is only intended to give guidance in selecting and using Knauf products. While we make every effort to ensure its accuracy, neither Knauf LLC and its branches nor any of this employees or affiliates warrant or assume any legal liability or responsibility for the completeness or usefulness of any failure in installation or constructing structure installation or building or caused by using this leaflet. Readers are advised to independently verify this information prior to reply on it. In particular, readers must obtain appropriate independent advice on the use of products in specific structures, installations or buildings to ensure compliance with all regulations, including health and safety regulations. Knauf reserves the right to amend technical specification without notice.